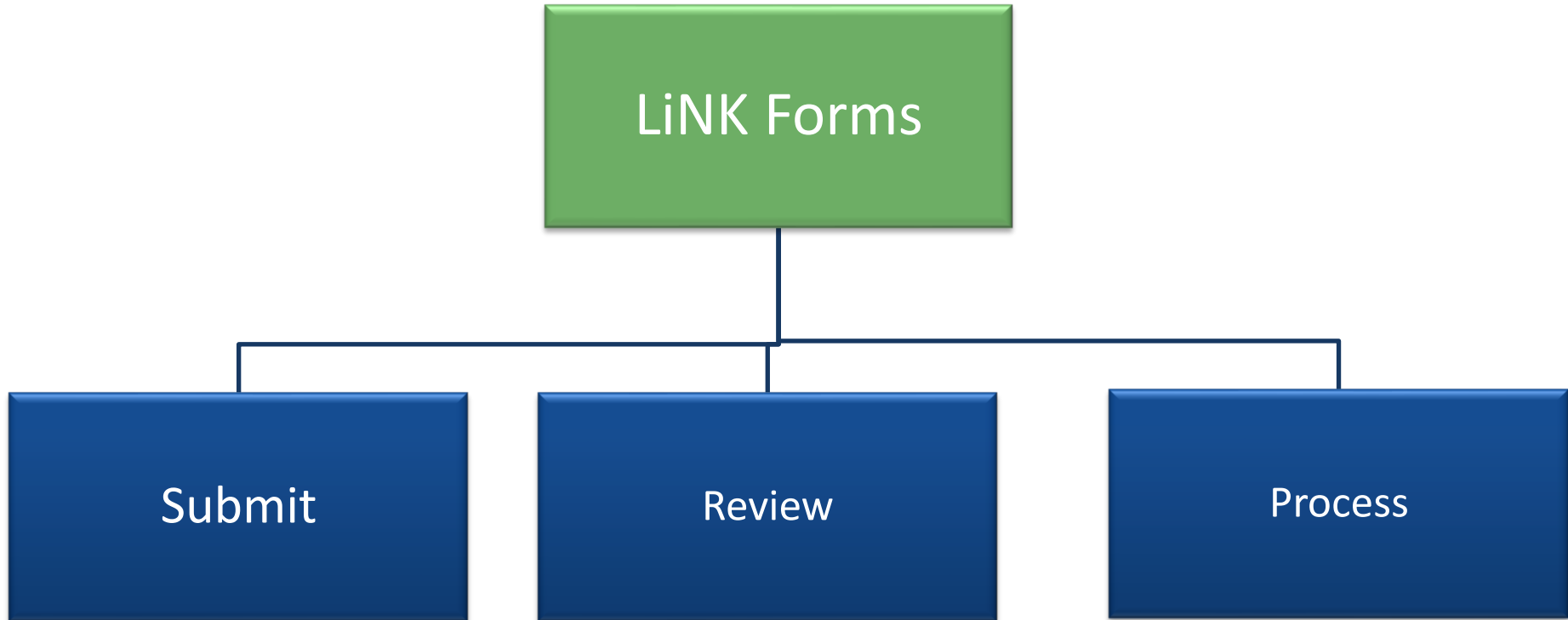




ModalConnect User Training

LiNK Forms

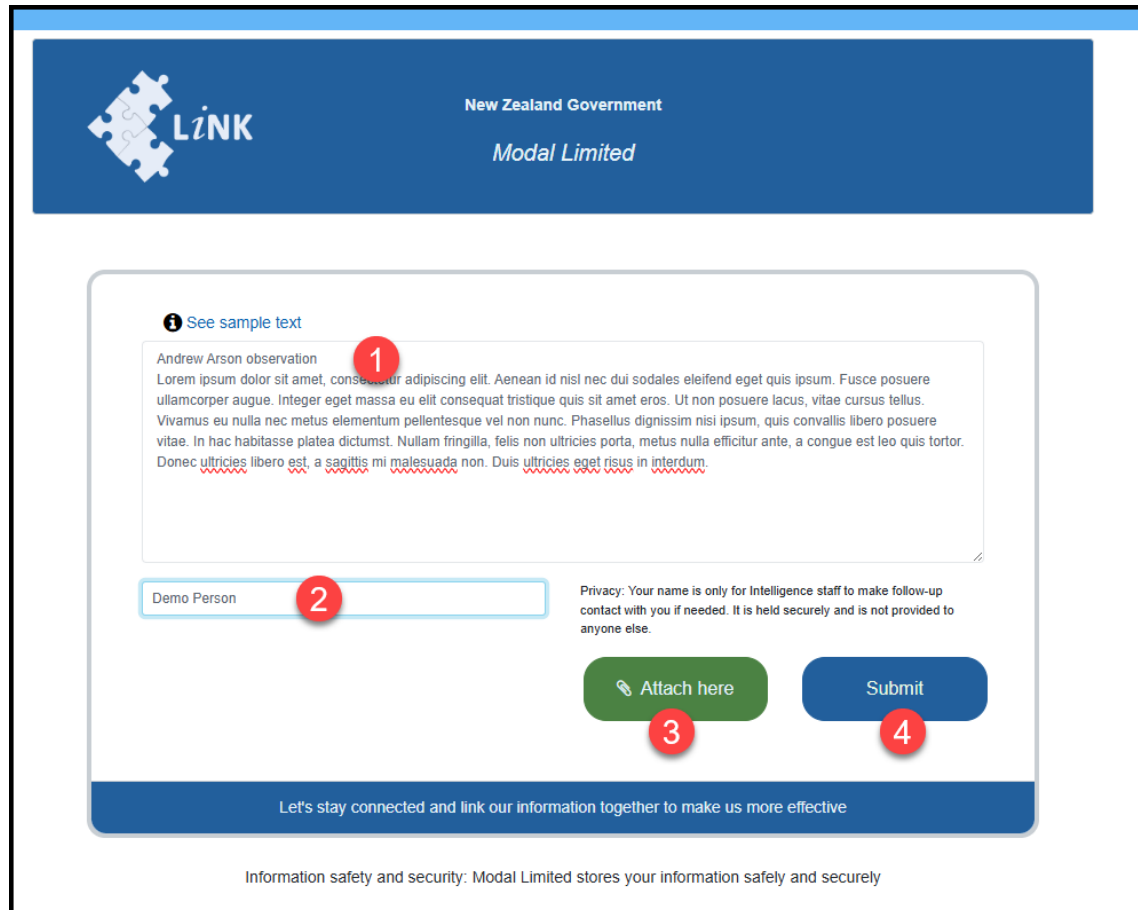
Make the Connection





From the main menu select New and then LiNK Form

1. Add text information
2. Add your name (optional)
3. Attachments can be added (optional)
4. Submit the form



LiNK New Zealand Government
Modal Limited

i See sample text

Andrew Arson observation
Lorem ipsum dolor sit amet, consectetur adipiscing elit. Aenean id nisi nec dui sodales eleifend eget quis ipsum. Fusce posuere ullamcorper augue. Integer eget massa eu elit consequat tristique quis sit amet eros. Ut non posuere lacus, vitae cursus tellus. Vivamus eu nulla nec metus elementum pellentesque vel non nunc. Phasellus dignissim nisi ipsum, quis convallis libero posuere vitae. In hac habitasse platea dictumst. Nullam fringilla, felis non ultricies porta, metus nulla efficitur ante, a congue est leo quis tortor. Donec ultricies libero est, a sagittis mi malesuada non. Duis ultricies eget risus in interdum.

Demo Person

Privacy: Your name is only for Intelligence staff to make follow-up contact with you if needed. It is held securely and is not provided to anyone else.

Attach here

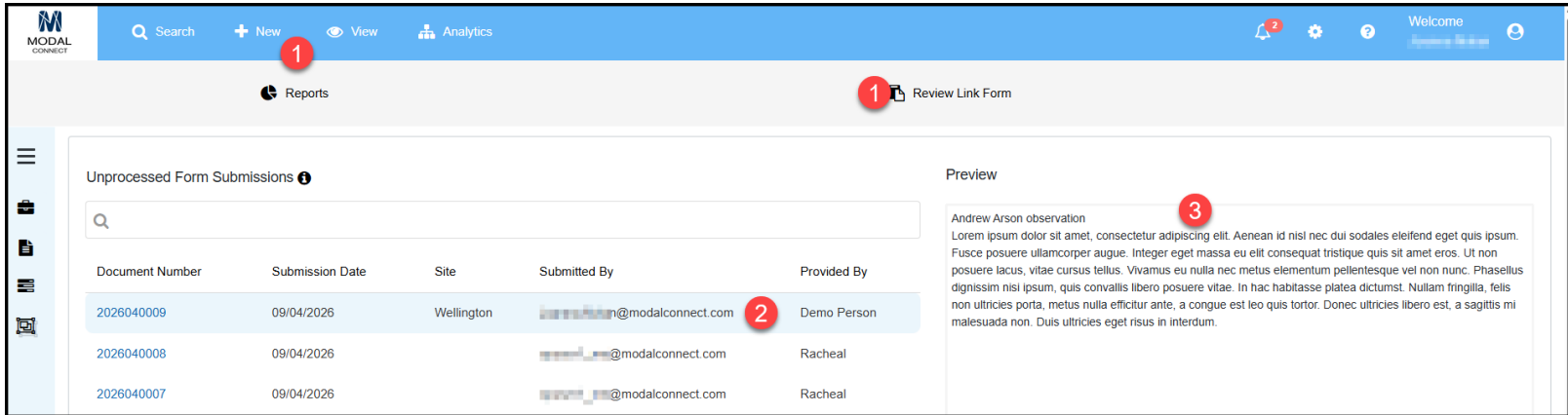
Submit

Let's stay connected and link our information together to make us more effective

Information safety and security: Modal Limited stores your information safely and securely



1. Select **View** from top menu and Review LiNK Form
2. Find your submitted Form and click on the line (not the number).
3. Note the Preview of the submitted details on the right.



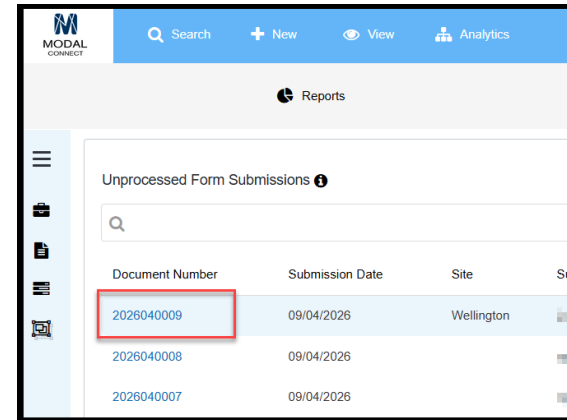
The screenshot shows the Modal Connect interface. At the top, there is a navigation bar with 'Search', '+ New', 'View', and 'Analytics'. A red circle '1' highlights the 'View' button. Below this is a 'Reports' section with a 'Review Link Form' button, also highlighted with a red circle '1'. The main content area is split into two panels: 'Unprocessed Form Submissions' and 'Preview'. The 'Unprocessed Form Submissions' panel contains a table with the following data:

Document Number	Submission Date	Site	Submitted By	Provided By
2026040009	09/04/2026	Wellington	[redacted]@modalconnect.com	Demo Person
2026040008	09/04/2026		[redacted]@modalconnect.com	Racheal
2026040007	09/04/2026		[redacted]@modalconnect.com	Racheal

A red circle '2' highlights the first row of the table. The 'Preview' panel on the right shows a text preview of the form content, with a red circle '3' highlighting the text 'Andrew Arson observation'.



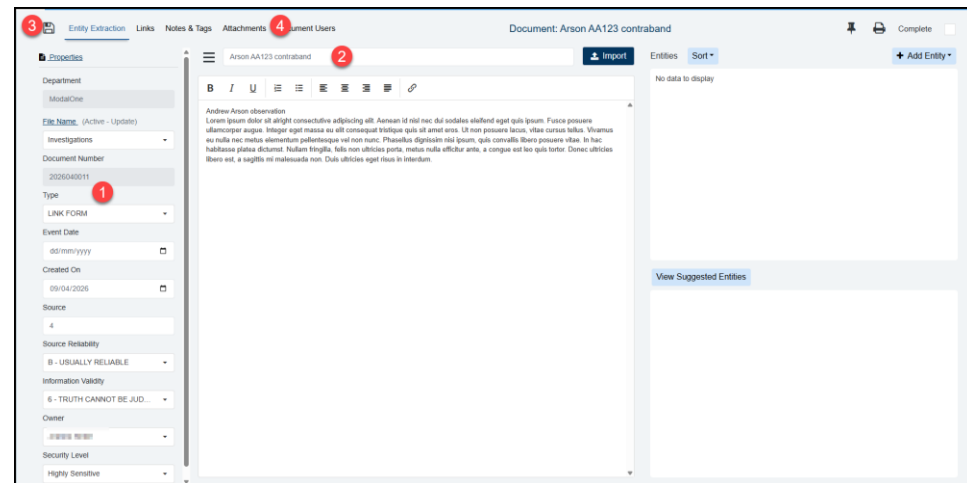
1. Click on the submission Document Number to process the LiNK Form



Document Number	Submission Date	Site	Su
2026040009	09/04/2026	Wellington	
2026040008	09/04/2026		
2026040007	09/04/2026		

This process opens a new Document with the submitted LiNK Form data.

1. Complete\check the Document details on the left.
2. Add a Title
3. Save the new Document and add Entities, links Notes or tags.
4. Any Attachments submitted can be viewed on the Attachments page.



Document: Arson AA123 contraband

Properties

- Department: ModalOne
- File Name: (Active - Update)
- Investigations: -
- Document Number: 2026040011
- Type: LiNK FORM (1)
- Event Date: dd/mm/yyyy
- Created On: 09/04/2026
- Source: 4
- Source Reliability: B - USUALLY RELIABLE
- Information Validity: 6 - TRUTH CANNOT BE JUD.
- Owner: [User]
- Security Level: Highly Sensitive

Arson AA123 contraband (2)

Andrew Arson observation
 Lorem ipsum dolor sit amet consectetur adipiscing elit. Aenean id nisi nec. Duis sodales sit amet ipsum. Fusce posuere ullamcorper augue. Integer eget massa ex. Ut consequat tristique quis sit amet ante. Et non posuere lacus. Vitae cursus tellus. Vivamus eu nulla nec. Malesuada pellentesque vel non nunc. Phasellus dignissim nisi ipsum, quis convallis libero posuere vitae. In hac habitasse platea dictumst. Nullam tristique. Falso non ultricies porta, malesuada efficitur ante, a congue est leo quis tortor. Donec ultricies libero est, a sagittis mi malesuada non. Duis ultricies eget risus in interdum.

Entities: Sort

No data to display

View Suggested Entities



Make the Connection